



STRONGER TOGETHER

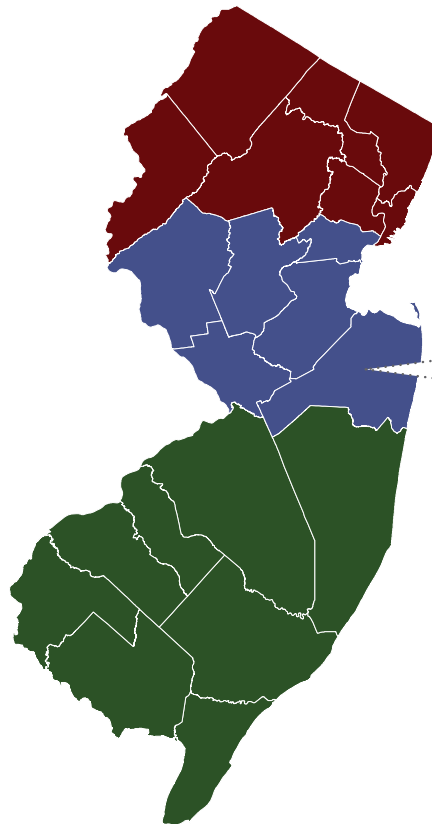
NEW JERSEY COMMUNITY DEVELOPMENT CORPORATIONS (CDCs) HAVE CREATED \$12 BILLION IN ECONOMIC IMPACT FOR THE STATE OF NEW JERSEY SINCE 1989. The Housing and Community Development Network of NJ reported on this investment and its results in “Stronger Together: The \$12 Billion Impact of Community Development Corporations in New Jersey.” This report found that NJ’s CDCs have produced 82,000 jobs, provided job training for more than 10,500 local residents, contributed \$5.5 billion in worker wages, and generated \$320 million in tax revenue for the state over the past twenty five years. This brief breaks down the compelling data from Stronger Together at the county/counties level where CDCs are improving their communities and investing in the future every day.

► SINCE 1989, **MORE THAN 1,500 DEVELOPMENTS** WERE UNDERTAKEN BY CDCs IN NEW JERSEY INCLUDING **21,000 AFFORDABLE HOMES** AND **OVER 2.5 MILLION SQ. FT. OF COMMERCIAL SPACE.**

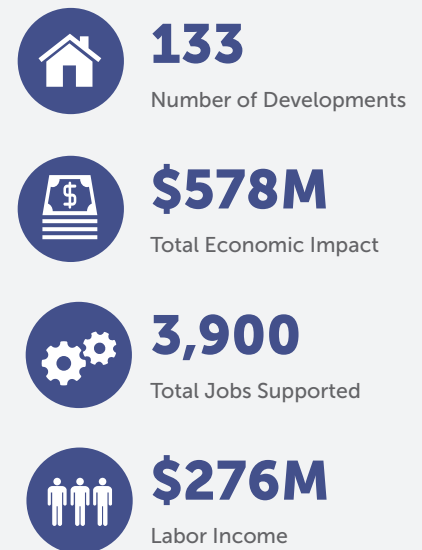
► **NORTH JERSEY**
650 DEVELOPMENTS
\$4.2 BILLION

► **CENTRAL JERSEY**
460 DEVELOPMENTS
\$3 BILLION

► **SOUTH JERSEY**
390 DEVELOPMENTS
\$4.8 BILLION



MONMOUTH COUNTY BY THE NUMBERS



STATEWIDE

**ADDED
82,000
JOBS**

through investments in real estate rehabilitation and new construction.

**CONTRIBUTED
\$5.5
BILLION**

in worker wages and in contracts with New Jersey businesses.

**PROVIDED
JOB TRAINING**

to more than
10,500
local residents

**EMPLOYED
10,000**
permanent
staff members

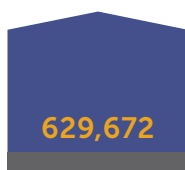
COUNTY SNAPSHOT

\$ MEDIAN INCOME \$84,526

POPULATION CHANGE



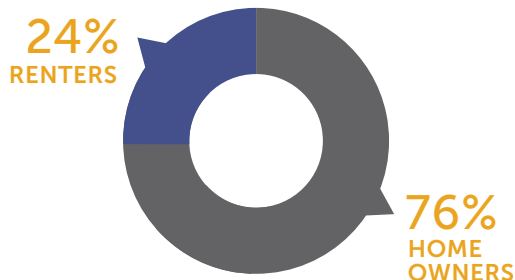
2010



2013



RENTERS/HOMEOWNERS



RENTERS

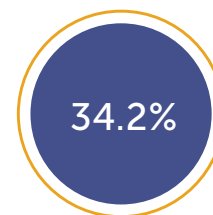
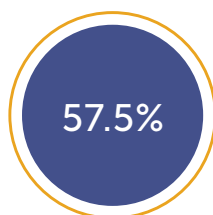
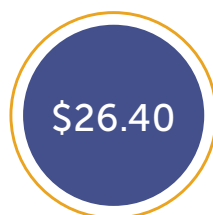
FAIR MARKET RENT

HOURLY HOUSING WAGE

POPULATION COST BURDENED

AVERAGE HOME PURCHASE COST

POPULATION COST BURDENED



▶ **PARTICIPATING CDCs:** Affordable Housing Alliance (prev. Monmouth Housing Alliance), AIDS Resource Foundation for Children, Allies, Inc., Catholic Charities, Diocese of Trenton, CityWorks, Coastal Habitat for Humanity, Collaborative Support Programs of NJ, Fairmount Housing Corporation HABcore, Inc., Homes For All, Interfaith Neighbors, Inc., Lutheran Social Ministries of NJ, Monarch Housing Associates, New Bridge Services, Inc., New Community Corporation, New Jersey Community Capital, Ocean Community Economic Action Now (OCEAN), Western Monmouth Habitat