

RESIDENT FOCUS GROUP:

tell us

WHAT
YOU

think

May 10th 2010

Housing & Community Development Network Membership Meeting December 7th, 2011



Education & Youth Development



REBUILDING OUR COMMUNITIES
YouthBuild
TRANSFORMING OUR LIVES

REBUILDING OUR COMMUNITIES
YouthBuild
TRANSFORMING OUR LIVES

World
COMMUNITY
UNDERSTANDING
INSPIRE
LEADERS
EDUCATION
TRY/CHANGE
POWER
CONSCIENCE

Rob
Mason
Dustin
Spokane
Hace
ME
GREAT F
REBUILD

MINI 18
NOSON
18
HC





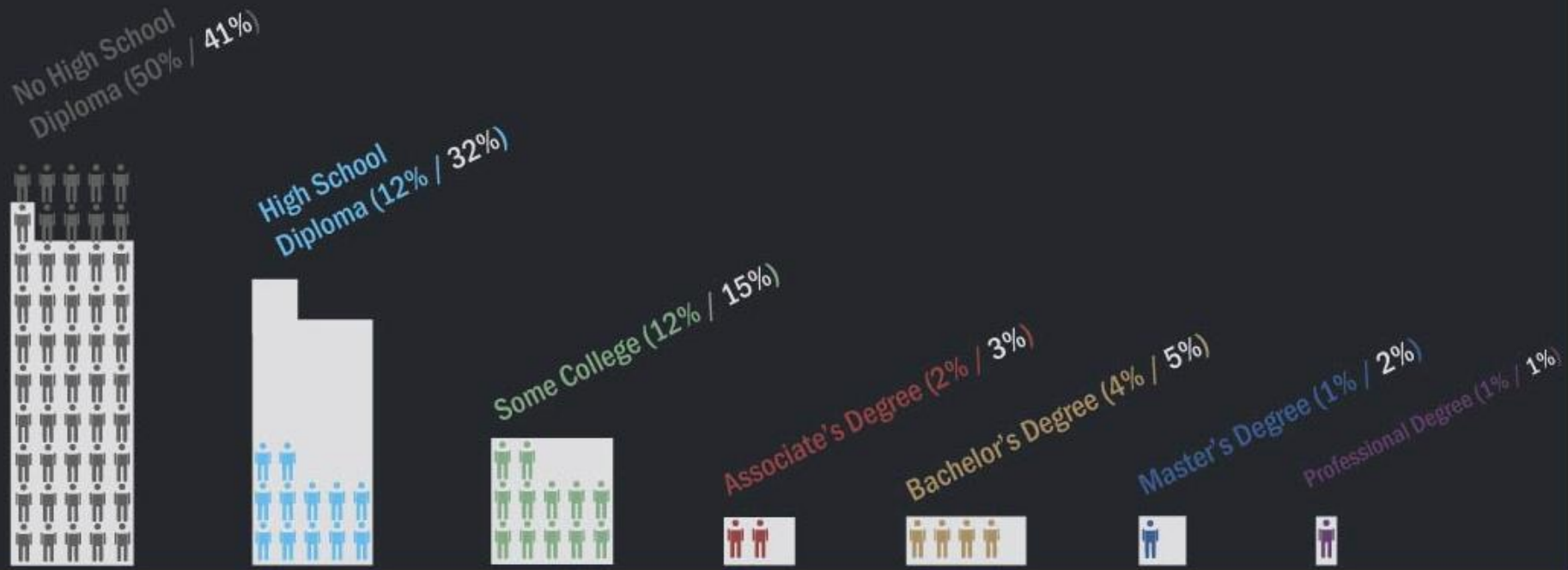




Communi
School of P

Educational Attainment, Adults 25 and Over

1% of Neighborhood Population
% of Paterson Population



Youth at Risk, Age 16 – 19: 50% HS Completion

Neighborhood-Based Initiatives

- Launching America's Newest National Park
- Replicating the work of the Harlem Children's Zone
- Catalytic Real Estate Projects
 - Alexander Hamilton Community Innovation Center
 - Spruce Terrace
 - Elm Street
- Ongoing Planning & Implementation



Immediate Focus Area: The Greater Spruce Street Neighborhood



Boundaries:

- e. Main**
- n. Totowa & West Broadway**
- w. Preakness & Reservoir**
- s. I-80**

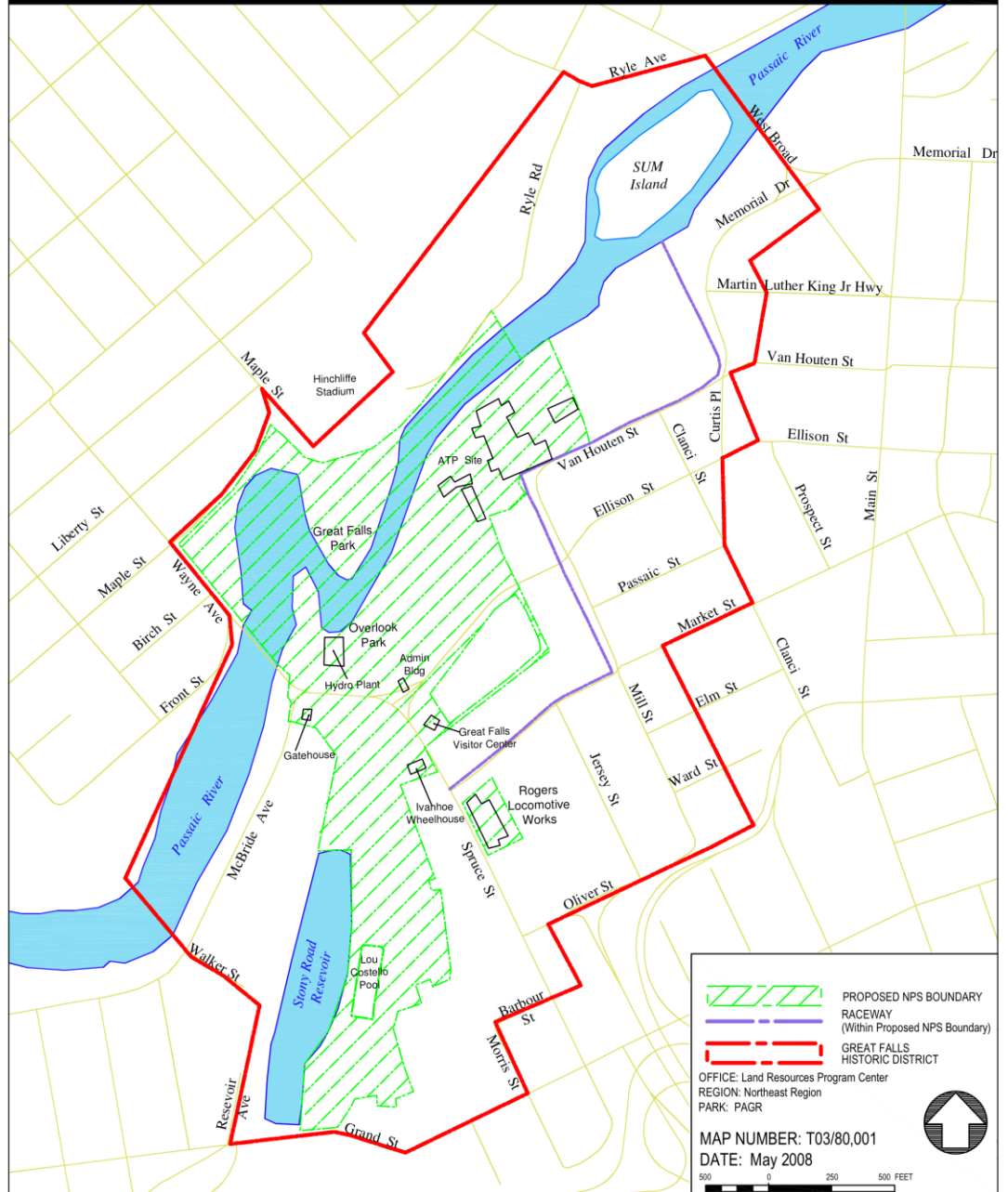
Note: Area intentionally surrounds future site of National Park




**Paterson Great Falls National
Historical Park**
Proposed Boundary

National Park Service
U.S. Department of the Interior





**Boundary for the
Future Great
Falls National
Historical Park**

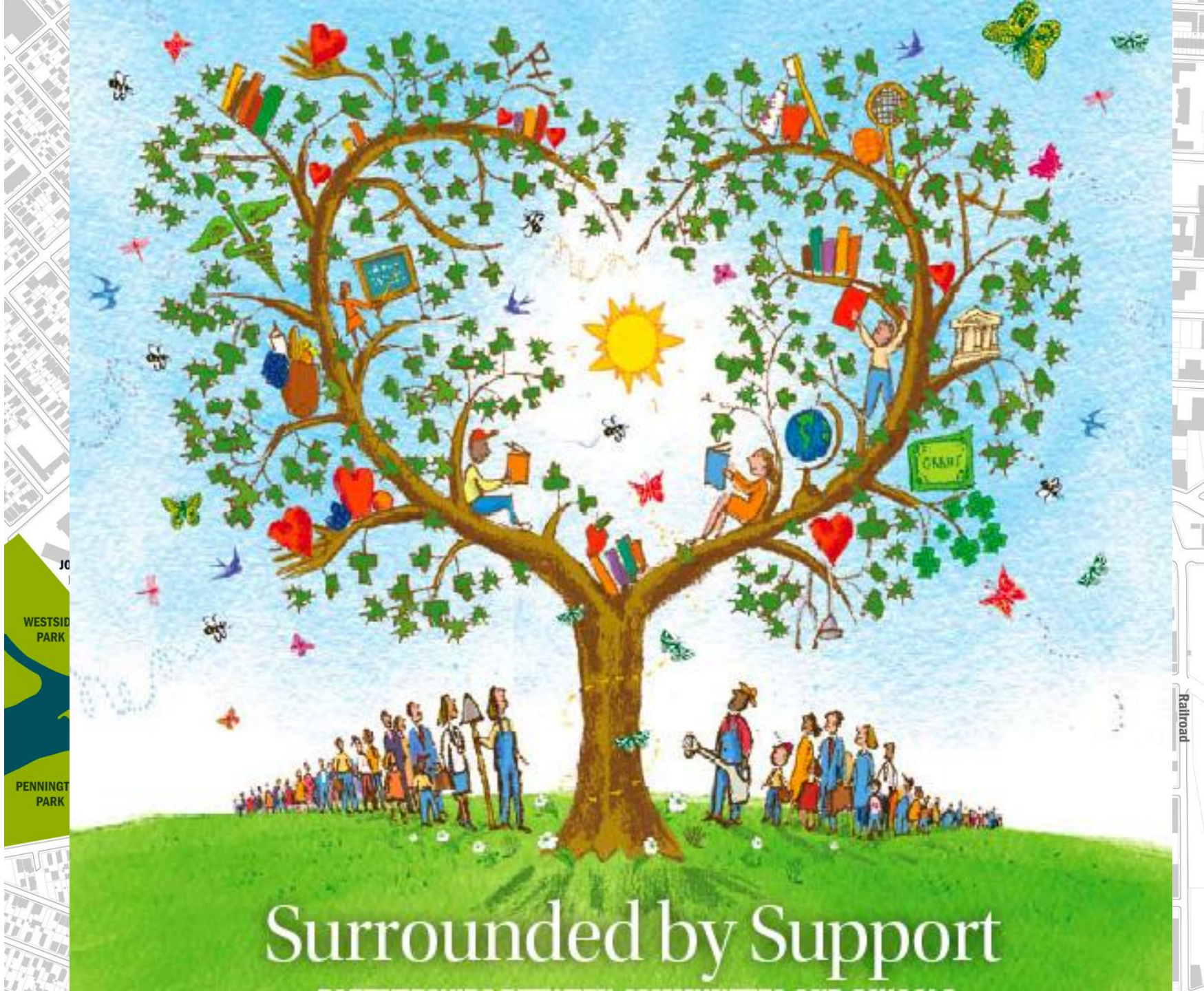


 PROPOSED NPS BOUNDARY
 RACEWAY
 (Within Proposed NPS Boundary)
 GREAT FALLS HISTORIC DISTRICT

OFFICE: Land Resources Program Center
 REGION: Northeast Region
 PARK: PAGR

MAP NUMBER: T03/80,001
 DATE: May 2008



Surrounded by Support

WESTSID
PARK

PENNINGT
PARK

Railroad



Ongoing Planning & Focus

- Arts Planning and Creative Development
- Strategic Business
Planning/Organizational Development
- Youth Transformation & Development
Center
- Partnerships for large-scale development
- Policy Development & Capacity Building