

# ST. JOSEPH'S HEALTH & NJCDC/NJCC



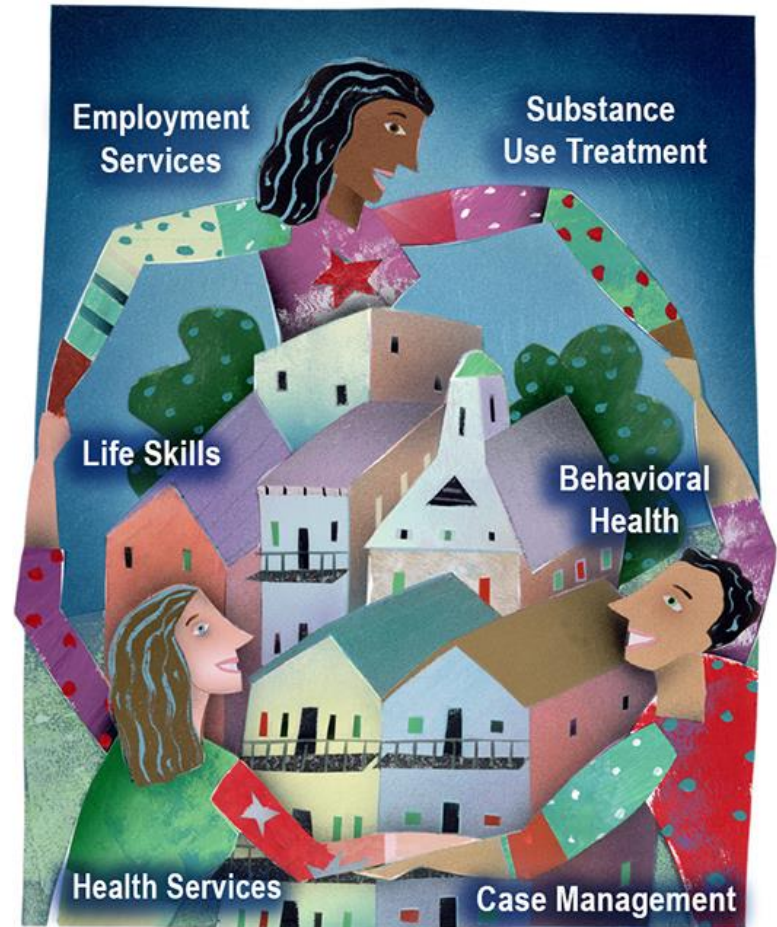
BARCLAY STREET HOUSING

PATERSON

NJ

# COMMUNITY DEVELOPMENT & HEALTH

- PARTNERSHIP BETWEEN SJH, NJCDC AND NJCC (CAPC)
- 71 NEW AFFORDABLE HOMES (MIX OF BR'S)
- 10 UNITS FOR INDIVIDUALS WITH SPECIAL NEEDS
- DESIGN AND ON-SITE SOCIAL SERVICES TO ADDRESS SOCIAL DETERMINANTS OF HEALTH
- REDEVELOPMENT OF VACANT PARCEL



# HEALTHY HOMES

- NEW CONSTRUCTION
- UNIVERSAL DESIGN FOR RANGE OF TENANTS
  - TOXIN FREE FINISHES, ACCESSIBILITY, HANDRAILS AND ENERGY EFFICIENT APPLIANCES
- ON-SITE SOCIAL, HEALTH AND WELLNESS SERVICES
- PROXIMITY TO MEDICAL CENTER



# ON-SITE SERVICES



- 5,000 SF PROGRAM/SERVICE AREA
- FAMILY REUNIFICATION
- AGING IN PLACE
- CASE MANAGEMENT
- SOCIAL, HEALTH AND WELLNESS WORKSHOPS
- NAVIGATION SERVICES TO LINK TENANTS TO RANGE OF PROVIDERS

# NEIGHBORHOOD REVITALIZATION



# PROJECT OVERVIEW

- 71-UNITS
  - 18 1-BR'S
  - 38 2-BR'S
  - 15 3-BR'S
  - (INCLUDES 10 UNITS FOR SPECIAL NEEDS)

## □ CAPITAL STACK

HMFA HOSPITAL PROGRAM	\$3,400,000
SJH PROGRAM MATCH	\$3,400,000
SPECIAL NEEDS HOUSING	\$1,000,000
LIHTC (4%) PROCEEDS	\$9,163,116
HMFA NOTE	\$4,500,000
OTHER GRANTS (FHLB/HOME)	\$510,103
DEFERRED DEV FEE	\$1,428,669
	<b>\$23,401,888</b>

