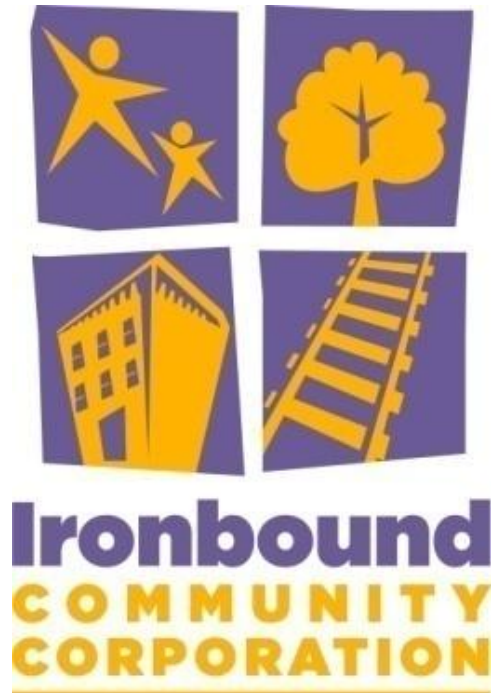


IMPACTS OF SUPERSTORM SANDY ON
IRONBOUND IN NEWARK –
A VULNERABLE, ENVIRONMENTAL JUSTICE
COMMUNITY

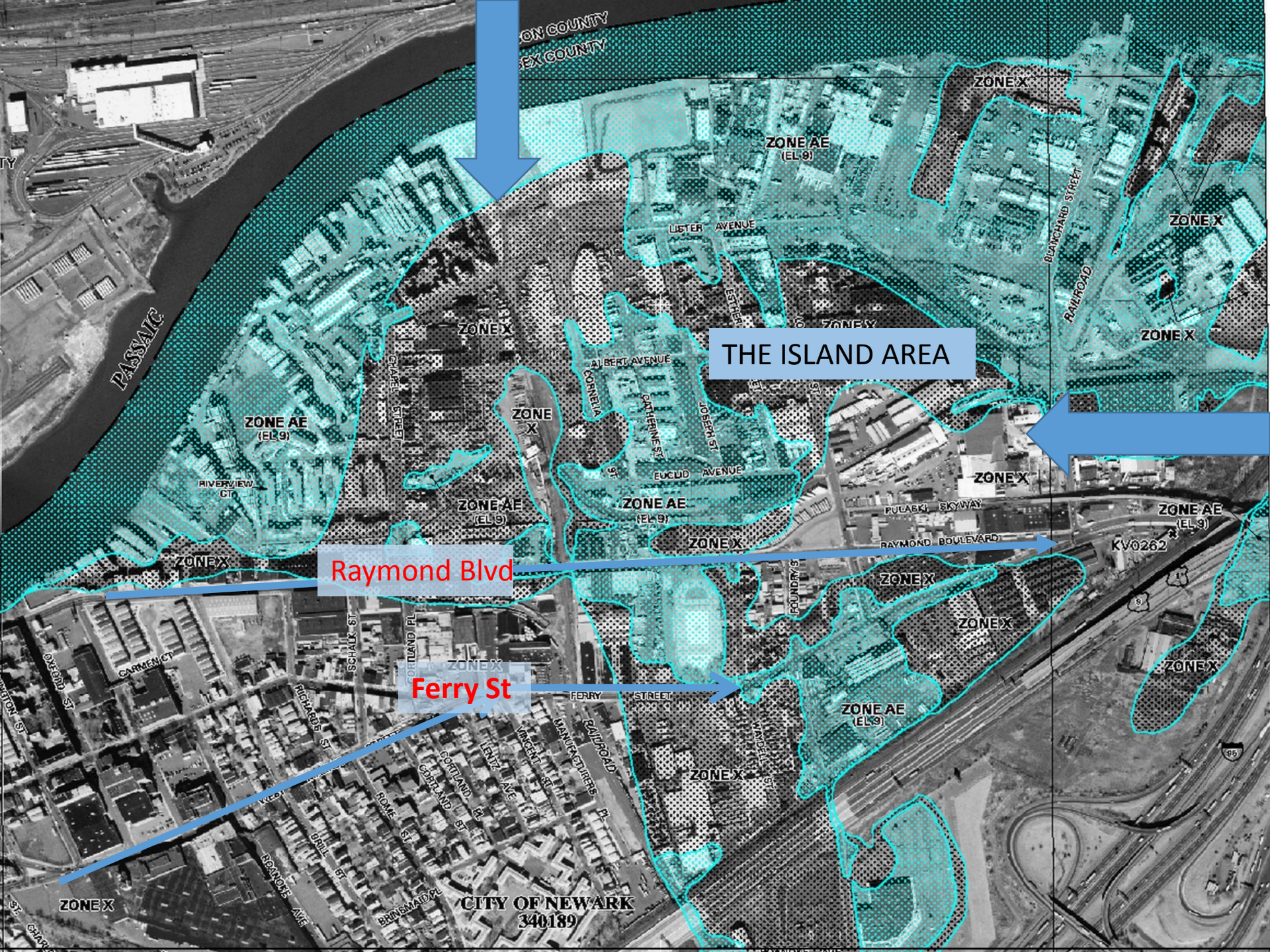




Surge topped 11' 9" at the mouth of the river

Sandy Storm Surge





ON COUNTY
EX COUNTY

ZONE X

ZONE AE
(EL 9)

LISTER AVENUE

BLANCHARD STREET

ZONE X

RAILROAD

ZONE X

THE ISLAND AREA

ZONE AE
(EL 9)

RIVERVIEW CT

ZONE X

ZONE X

ALBERT AVENUE

COCHRAN AVENUE

EUCLID AVENUE

EUCLID AVENUE

ZONE X

PULASKI SKYWAY

RAYMOND BOULEVARD

ZONE AE
(EL 9)

KV0262

Raymond Blvd

ZONE X

ZONE X

ZONE X

ZONE X

ZONE X

Ferry St

ZONE X

FERRY STREET

ZONE AE
(EL 9)

ZONE X

ZONE X

CITY OF NEWARK
340189

96



The "Island":
Mixed Industrial-Residential
Environmental Justice Community



THE AFTERMATH

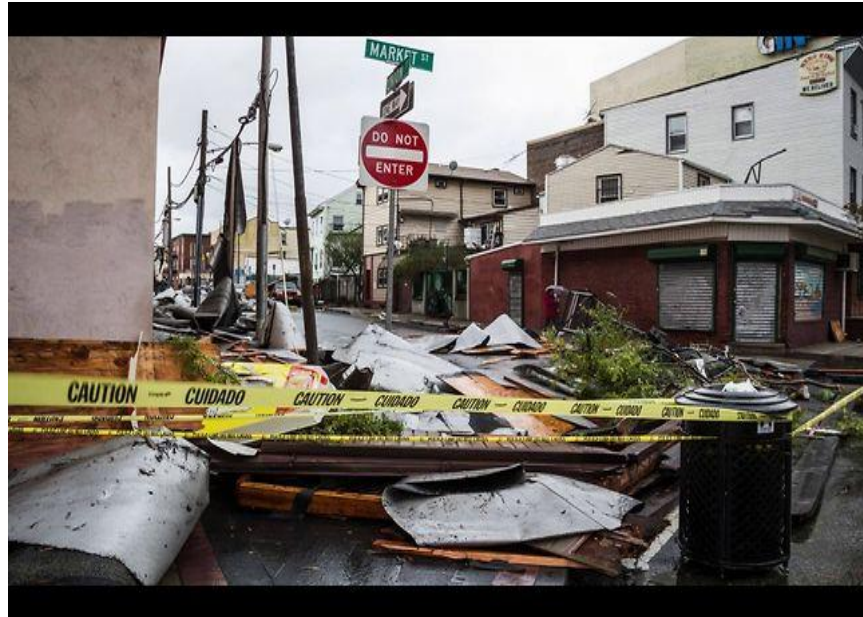


PASSAIC SEWAGE TREATMENT FACILITY

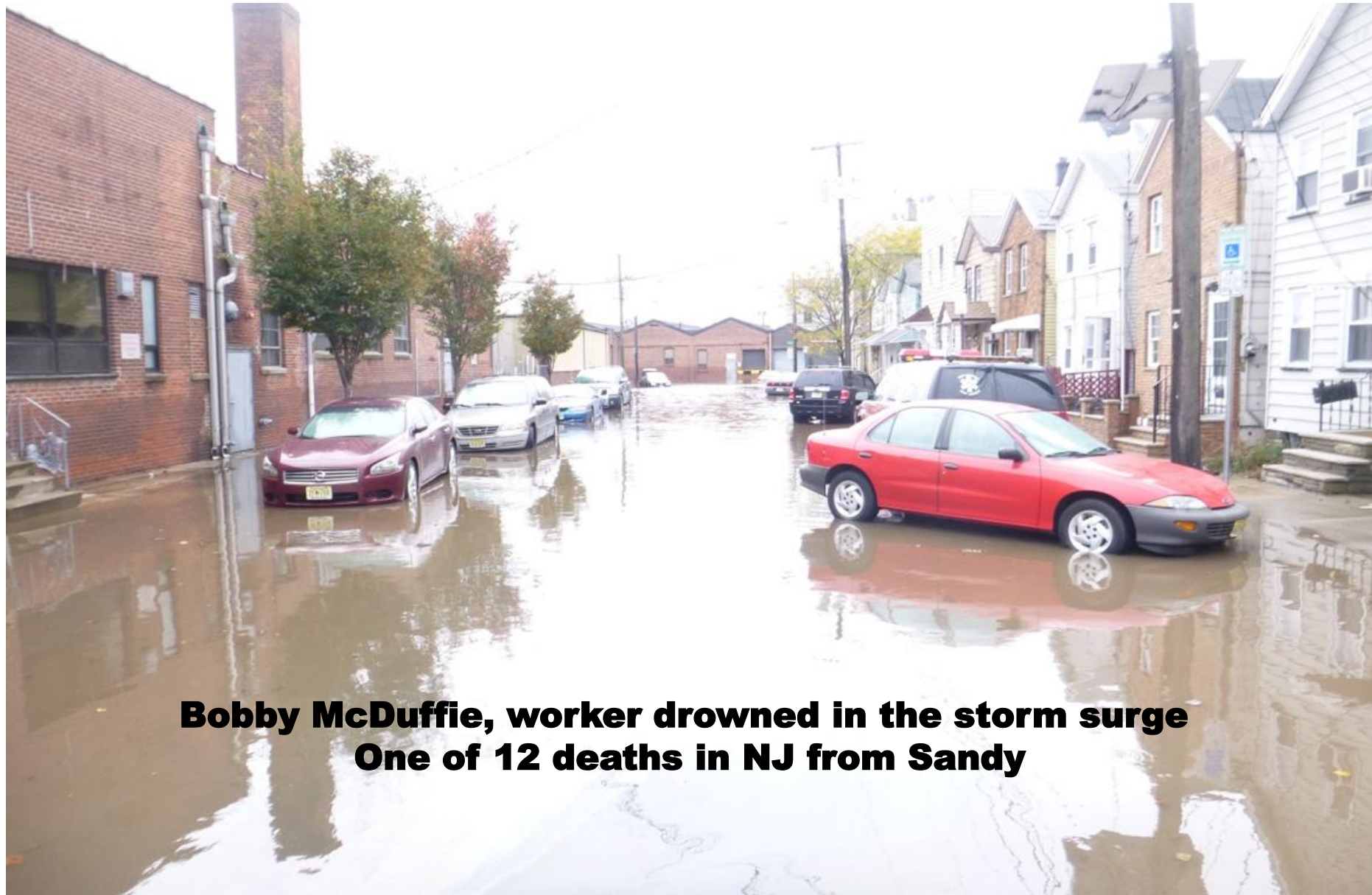
NEWARK AIRPORT



WIDESPREAD POWER OUTAGES



HOMES IN THE ISLAND DEVASTATED



**Bobby McDuffie, worker drowned in the storm surge
One of 12 deaths in NJ from Sandy**

FAMILIES STILL TRYING TO RECOVER





ICC Response

- Immediate Relief Efforts on the Ground
- Partnership Development
- Community Assessment, Outreach & Organization
- Facilitate Access to Resources
- Ongoing Relief
- Clean-ups & Rehabilitation
- Case Management
- Mental Health Support
- Advocacy
- Establish Long Term Recovery Group
- Emergency Preparedness
- Resiliency Planning



Early Relief Efforts

800 Families in the 1st months

- Hot Meals Daily
- Food, Blankets, Clothes
- Food & Goods Gift Cards
- Community Meetings: FEMA, Red Cross, etc.



Hot Lunches & Dinners at Terrell Homes

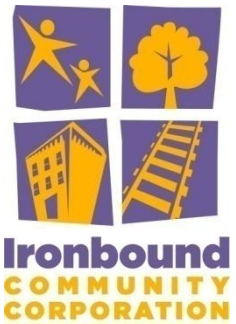




Ongoing Relief Efforts

- Clean-ups & Rehabilitation
- Case Management
- Mental Health Support
- Advocacy
- Establish Long-Term Recovery Group
- Emergency Preparedness
- Resiliency Planning

ARE YOU READY FOR THE NEXT
STORM?



CHANGING CLIMATE CAN BRING

- **FLOODING**
- **HURRICANES**
- **BLACKOUTS**
- **EXTREME HEAT**
- **EXTREME COLD/SNOW**
- **AIR POLLUTION**



WHAT SANDY REMINDED US ABOUT VULNERABILITY

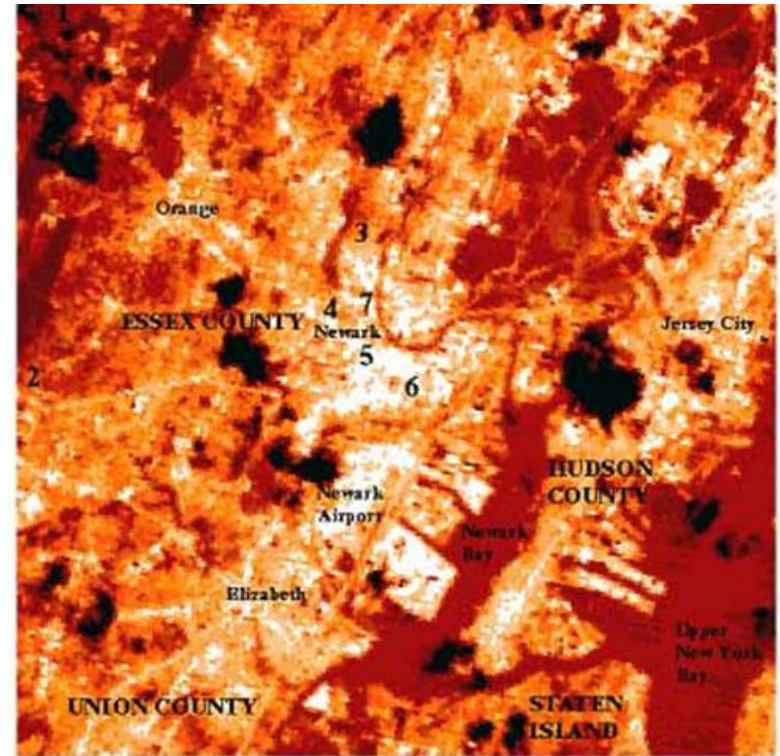
- Vulnerable Industrial waterfronts
- Surrounded & inundated by environmental hazards
- Aging, failing infrastructure
- Limited resources to prepare & recover
- Weak communications & disaster systems
- Importance of local social networks



SNAPSHOTS of VULNERABILITY

Research shows that future climate scenarios will disproportionately affect those who are socially and economically disadvantaged (Morello-Frosch, 2009).

Sandy Storm Surge Areas in Blue



Extreme Heat Map

Areas in White are Hottest (over 100 dF)
(C. Rosenzweig, 2005)

RESILIENCY & ADAPTATION

Climate Change RESILIENCE = the ability to anticipate and prepare for, and to survive and recover from, the effects of climate change.

Climate Change ADAPTATION = actions taken to help communities and ecosystems cope with changing climate conditions



Climate Resiliency & Adaptation Measures

Some Examples of Resilience and Adaptation Measures:

- Emergency/ Disaster preparedness Plans
- Local community based first responders
- Cooling centers
- Local food sources
- Green infrastructure -- permeable pavements, rain gardens, etc.
- Rooftop solar power - local power sources

CRITICAL to EJ is the INCLUSION & DIRECT INVOLVEMENT OF IMPACTED, VULNERABLE COMMUNITIES in the PLANNING & IMPLEMENTATION OF MEASURES

WHAT RESILIENCY LOOKS LIKE



Take the Preparedness Challenge

1. Drop, Cover and Hold 2. Create Out of Area Contact 3. Store Emergency Drinking Water

TAKE THESE THREE STEPS • TEACH 3 OTHERS



Essex County Riverfront Park – Adjacent to Terrell Homes

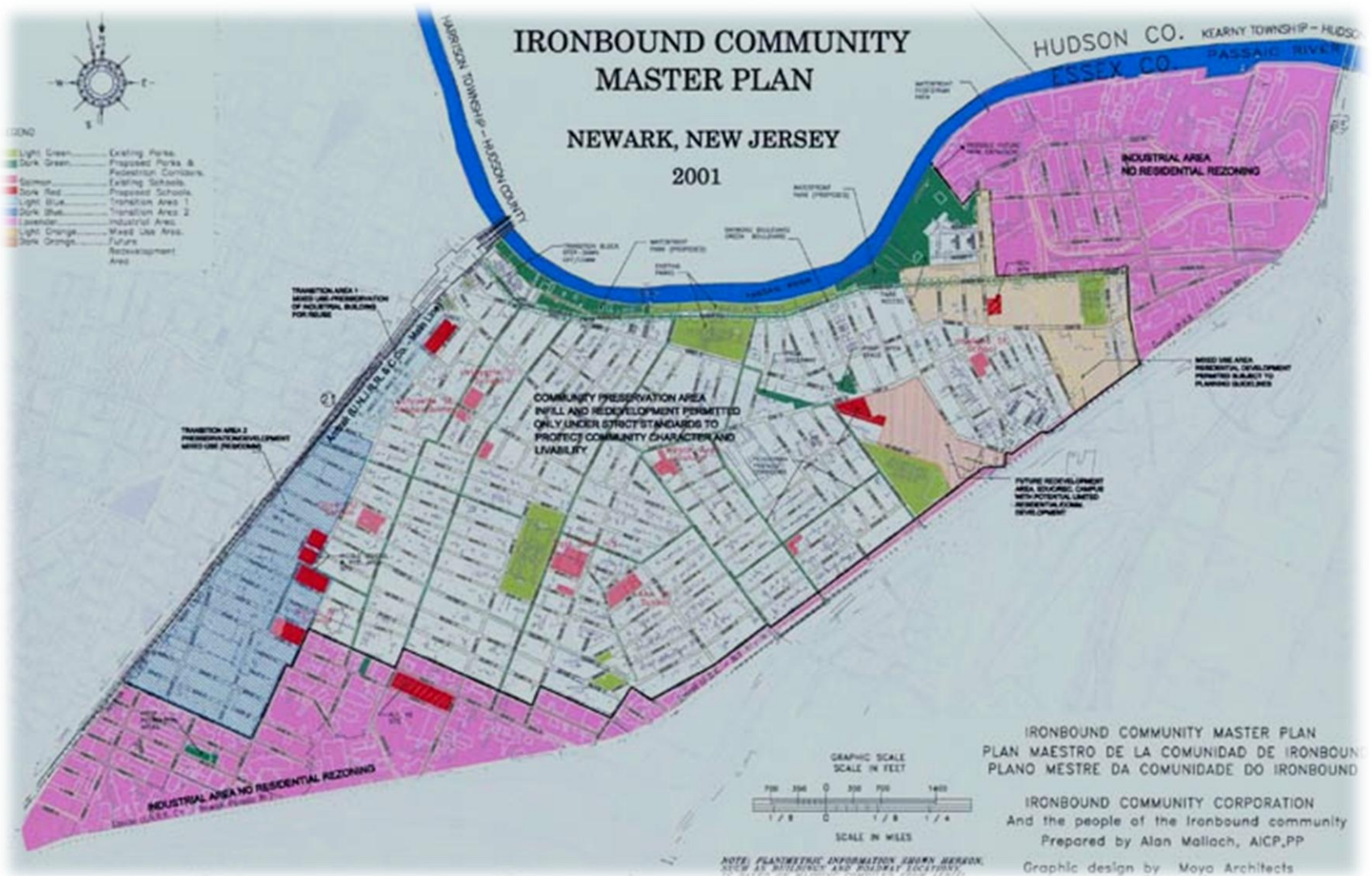
Ironbound
COMMUNITY
CORPORATION





Community Master Plan

Ironbound
COMMUNITY
CORPORATION



CLOSING THE CLIMATE GAP

- **Close the Climate Gap by Investing in Communities Hardest Hit**
- **Maximizing Reductions in Greenhouse Gas Emissions and Toxic Air Pollution in Neighborhoods with the Dirtiest Air.**
- **Close the Health Impacts Gap Between People of Color and the Poor, and the Rest of the Population.**
- **Focus Planning and Intervention in Poor and Minority Neighborhoods.**
- **Use New Mapping Technologies to Identify Vulnerable Neighborhoods**

Rachel Morello-Frosch, Ph.D., MPH | Manuel Pastor, Ph.D. | James Sadd, Ph.D. | Seth B. Shonkoff



HOW DO WE BEGIN TO PREPARE

NY-NJ Sandy Regional Assembly Recovery Agenda

- 1) Integrate regional rebuilding efforts with local resiliency priorities;*
- 2) Strengthen vulnerable communities & reduce public health threats,*
- 3) Expand community-based climate change planning, disaster preparedness & response.*



CAN YOU ANSWER YES?

- **I know what emergencies or disasters are most likely to occur in my community**
- **I have a family disaster plan and have practiced it**
- **I have an emergency preparedness kit**
- **I know where to get information about evacuations, weather reports, and shelters in times of emergency**
- **I have taken action to help my community prepare**

PREPARING MY FAMILY

Step 1 – Get a Kit

Step 2 – Discuss Kit Rules

Step 3 – Personalize Your Kit

Step 4 – Make an Evacuation Plan

Step 5 – Be Informed

PREPARING MY COMMUNITY

- **Learn about the hazards most likely to affect your community.**
- **Learn about local emergency response plans, drills, and exercises.**
- **Find out what your community is doing to prepare.**



PREPARING FOR CLIMATE CHANGE

EXAMPLES

- **Check out the Maps of potential hazards**
- **Help us create a Community Preparedness Plan**
- **Get Trained to be a first responder**
- **Get to know your neighbors and neighborhood**
- **Planting more Green -- rain gardens, trees**
- **Creating more local power sources like solar**

HOW DO WE BEGIN?

TONIGHT!

- **Get an Emergency Kit**
- **Sign up for Training**
- **Find out about local resources**
- **Tells us what hazards you've faced and what new hazards may come -- MAPS**
- **Talk to your kids – check out the ART**
- **Spread the word**



CLIMATE CHANGE SURVIVORS

